

FEDERAL ENERGY REGULATORY COMMISSION
WASHINGTON, D.C. 20426
April 17, 2015

OFFICE OF ENERGY PROJECTS

Project No. 2413-117 – Georgia
Wallace Dam Pumped Storage Project
Georgia Power Company

**Subject: Scoping Document 1 for the Wallace Dam Pumped Storage Project
(FERC No. 2413-117)**

To the Parties Addressed:

The Federal Energy Regulatory Commission (Commission) is currently reviewing the Pre-Application Document filed on February 18, 2015, by Georgia Power Company (Georgia Power) for relicensing the Wallace Dam Pumped Storage Project (Wallace Dam Project) (FERC No. 2413). The Wallace Dam Project is located on the Oconee River in Hancock, Putnam, Greene, and Morgan Counties, Georgia.

Under the Integrated Licensing Process, Georgia Power must file their preliminary licensing proposal or draft license application by November 21, 2017. The final license application must be filed with the Commission by May 31, 2018, two years before the license expires.

Pursuant to the National Environmental Policy Act of 1969, as amended, Commission staff intends to prepare an environmental assessment (EA), which will be used by the Commission to determine whether, and under what conditions, to issue a new license for the project. To support and assist our environmental review, we are beginning the public scoping process to ensure that all pertinent issues are identified and analyzed, and that the EA is thorough and balanced.

We invite your participation in the scoping process and are circulating the enclosed Scoping Document 1 (SD1) to provide you with information on the Wallace Dam Project. We are also soliciting your comments and suggestions on our preliminary list of issues and alternatives to be addressed in the EA. We are also requesting that you identify any studies that would help provide a framework for collecting pertinent information on the resource areas under consideration necessary for the Commission to prepare the EA for the project.

We will hold two scoping meetings for the Wallace Dam Project to receive input on the scope of the EA. A daytime meeting will be held at 1:00 p.m. on May 20, 2015, at the Rock Eagle 4-H Center, in Sutton Hall, 350 Rock Eagle Road, Eatonton, Georgia. An evening meeting will be held at 6:30 p.m. on May 20, 2015, at the Rock Eagle 4-H Center, in Sutton Hall, 350 Rock Eagle Road, Eatonton, Georgia. We will also visit the project facilities on May 19, 2015, beginning at 9:00 a.m. at Georgia Power's Old Salem Park, 1530 Old Salem Road, Greensboro, Georgia 30642.

SD1 is being distributed to the Commission's official mailing list (see section 9.0 of the enclosed SD1). If you wish to be added to, or removed from, the Commission's official mailing list, please send your request by email to efiling@ferc.gov, or mail to: Kimberly D. Bose, Secretary, Federal Energy Regulatory Commission, 888 First Street, N.E., Room 1A, Washington, DC 20426. All written or e-mailed requests must specify your wish to be added to, or removed from, the mailing list, and must clearly identify the project name and FERC project number (*e.g.*, Wallace Dam Pumped Storage Project, P-2413-117) on the first page.

Please review SD1 and, if you wish to provide comments, follow the instructions in section 6.0, *Request for Information and Studies*. If you have any questions about SD1, the scoping process, or how Commission staff will develop the EA for this project, please contact Allan Creamer at (202) 502-8365, or allan.creamer@ferc.gov. Additional information about the Commission's licensing process and the Wallace Dam Project may be obtained from our website, <http://www.ferc.gov>, or Georgia Power's website, <http://www.georgiapower.com/about-energy/energy-sources/hydro-power/hydro-projects/wallace/home.cshtml>.

Enclosure: Scoping Document 1

cc: Mailing List
Public Files

SCOPING DOCUMENT 1
WALLACE DAM PUMPED STORAGE PROJECT
(FERC NO. 2413-117)

GEORGIA



Federal Energy Regulatory Commission
Office of Energy Projects
Division of Hydropower Licensing
Washington, D.C.

April 2015

TABLE OF CONTENTS

1.0	INTRODUCTION	- 1 -
2.0	SCOPING	- 4 -
2.1	Purpose of Scoping.....	- 4 -
2.2	Comments, Scoping Meetings, and environmental site review	- 5 -
3.0	PROPOSED ACTION AND ALTERNATIVES	- 7 -
3.1	NO-ACTION ALTERNATIVE	- 7 -
3.1.1	Existing Project Facilities.....	- 7 -
3.1.2	Existing Project Operation	- 9 -
3.2	APPLICANT’S PROPOSAL	- 10 -
3.2.1	Proposed Project Facilities and Operations.....	- 10 -
3.2.2	Proposed Environmental Measures	- 10 -
4.0	SCOPE OF CUMULATIVE EFFECTS ANALYSIS AND RESOURCE ISSUES	- 13 -
4.1	CUMULATIVE EFFECTS	- 13 -
4.2	RESOURCE ISSUES	- 14 -
4.2.1	Geologic and Soils Resources	- 15 -
4.2.2	Aquatic Resources.....	- 15 -
4.2.3	Terrestrial Resources.....	- 15 -
4.2.4	Threatened and Endangered Species.....	- 16 -
4.2.5	Recreation and Land Use	- 16 -
4.2.6	Cultural Resources	- 16 -
4.2.7	Developmental Resources	- 17 -
5.0	PROPOSED STUDIES	- 17 -
6.0	REQUEST FOR INFORMATION AND STUDIES	- 19 -
7.0	EA PREPARATION SCHEDULE	- 21 -
8.0	PROPOSED EA OUTLINE	- 22 -
9.0	COMPREHENSIVE PLANS	- 23 -
10.0	MAILING LIST	- 25 -

APPENDIX A – STUDY PLAN CRITERIA

APPENDIX B – PROCESS PLAN AND SCHEDULE

LIST OF FIGURES

Figure 1.	Project location in the Oconee River Basin	- 3 -
Figure 2.	Project facilities for the Wallace Dam Project.	- 8 -

SCOPING DOCUMENT 1

1.0 INTRODUCTION

The Federal Energy Regulatory Commission (Commission or FERC), under the authority of the Federal Power Act (FPA),¹ may issue licenses for terms ranging from 30 to 50 years for the construction, operation, and maintenance of non-federal hydroelectric projects. On February 18, 2015, Georgia Power Company (Georgia Power) filed a Pre-Application Document (PAD) and Notice of Intent to seek a new license for the Wallace Dam Pumped Storage Project (Wallace Dam Project, or project) (FERC Project No. 2413).²

The Wallace Dam Project is located at river mile (RM) 172.7 on the Oconee River, in Hancock, Putnam, Green, and Morgan Counties, Georgia (figure 1). The project occupies about 370 acres of federal land administered by the U.S. Forest Service, as the Oconee National Forest.

Georgia Power proposes to continue operating the project as a pumped storage facility, using Lake Oconee as the upper reservoir and the downstream Lake Sinclair, which is part of Georgia Power's Sinclair Hydroelectric Project No. 1951,³ as the lower reservoir. The powerhouse for the Wallace Dam Project has six turbine/generating units, including two conventional units and four reversible pump units. The project has a total installed capacity of 321.3 megawatts (MW), generates an average of 383,038 megawatt-hours (MWh) annually, and has a substation and transmission line. A more detailed description of the project is provided in section 3.0, *Proposed Action and Alternatives*.

¹ 16 U.S.C. §§ 791(a)-825(r).

² The current license for the Wallace Dam Project was issued with an effective date of June 1, 1970, for a term of 50 years, and expires on May 31, 2020. *See* 42 FPC 356 (August 6, 1969) and 43 FPC 915 (June 19, 1970).

³ *See* 74 FERC ¶ 62,146 (1996).

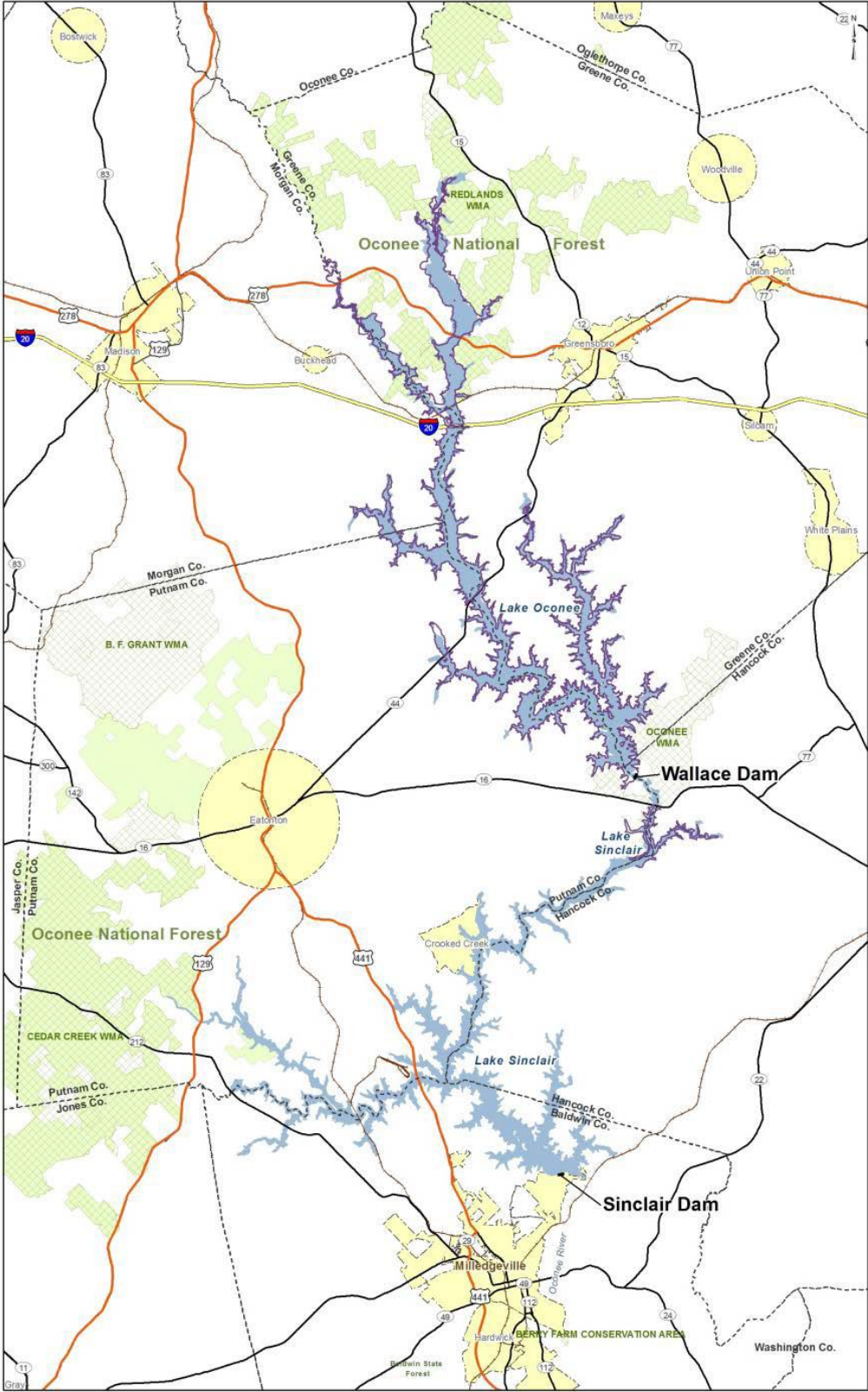


Figure 1. Project location in the Oconee River Basin (Source: Georgia Power, 2015).

The National Environmental Policy Act of 1969 (NEPA),⁴ the Commission's regulations, and other applicable laws require that we independently evaluate the environmental effects of relicensing the Wallace Dam Project as proposed, and also consider reasonable alternatives to the licensee's proposed action. At this time, we intend to prepare an environmental assessment (EA) that describes and evaluates the probable effects, including an assessment of site-specific and cumulative effects, if any, of the proposed action and alternatives. The EA preparation will be supported by a scoping process to ensure that all pertinent issues are identified and analyzed. Although our current intent is to prepare an EA, there is a possibility that an environmental impact statement (EIS) may be required. The scoping process will satisfy the NEPA scoping requirements, irrespective of whether the Commission issues an EA or an EIS.

2.0 SCOPING

This Scoping Document 1 (SD1) is intended to advise all participants as to the proposed scope of the EA and to seek additional information pertinent to this analysis. This document contains: (1) a description of the scoping process and schedule for the development of the EA; (2) a description of the applicant's proposed action and alternatives; (3) a preliminary identification of environmental issues; (4) a request for comments and information; (5) a proposed EA outline; and (6) a preliminary list of comprehensive plans that are applicable to the project.

2.1 PURPOSE OF SCOPING

Scoping is the process used to identify issues, concerns, and opportunities for enhancement or mitigation associated with a proposed action. According to NEPA, the process should be conducted early in the planning stage of a project. The purposes of the scoping process are as follows:

- invite participation of federal, state, and local resource agencies; Indian tribes; non-governmental organizations (NGOs); and the public to identify significant environmental and socioeconomic issues related to the proposed project;
- determine the resource issues, depth of analysis, and significance of issues to be addressed in the EA;
- identify how the project would or would not contribute to cumulative effects in the project area;

⁴ National Environmental Policy Act of 1969, as amended (Pub. L. 91-190. 42 U.S.C. 4321-4347, January 1, 1970, as amended by Pub. L. 94-52, July 3, 1975, Pub. L. 94-83, August 9, 1975, and Pub. L. 97-258, §4(b), September 13, 1982).

- identify reasonable alternatives to the proposed action that should be evaluated in the EA;
- solicit from participants available information on the resources at issue, including existing information and study needs; and
- determine the resource areas and potential issues that do not require detailed analysis during review of the project.

2.2 COMMENTS, SCOPING MEETINGS, AND ENVIRONMENTAL SITE REVIEW

During preparation of the EA, there will be several opportunities for the resource agencies, Indian tribes, NGOs, and public to provide input. These opportunities occur:

- during the public scoping process and study plan meetings, when we solicit oral and written comments regarding the scope of the issues and analysis for the EA;
- in response to the Commission’s notice that the project is ready for environmental analysis; and
- after issuance of the EA, when we solicit written comments on the EA.

In addition to written comments solicited by this SD1, we will hold two public scoping meetings and an environmental site review in the vicinity of the project. A daytime meeting will focus on concerns of resource agencies, NGOs, and Indian tribes, while an evening meeting will focus on receiving input from the public. We invite all interested agencies, Indian tribes, NGOs, and individuals to attend one or both of the meetings to assist us in identifying the scope of environmental issues that should be analyzed in the EA. All interested parties are also invited to participate in the environmental site review. The times and location of the meetings and environmental site review are as follows:

Daytime Scoping Meeting

Date and Time: Wednesday, May 20, 2015 at 1:00 p.m.
 Location: Rock Eagle 4-H Center, Sutton Hall
 350 Rock Eagle Road
 Eatonton, Georgia 31024
 Phone Number: (706) 484-2868

Evening Scoping Meeting

Date and Time: Wednesday, May 20, 2015 at 6:30 p.m.
Location: Rock Eagle 4-H Center, Sutton Hall
350 Rock Eagle Road
Eatonton, Georgia 31024
Phone Number: (706) 484-2868

Environmental Site Review

Date and Time: Tuesday, May 19, 2015 at 9:00 a.m.
Location: Old Salem Park
1530 Old Salem Road
Greensboro, Georgia 30642
Directions: Located near the middle of Lake Oconee, off Highway 44. Follow Linger Longer Road then take a left onto Old Salem Road.

Please notify Courtenay O'Mara, Southern Company Generation, at g2oconeerel@southernco.com by May 5, 2015, if you plan to attend the environmental site review. Participants of the tour must provide identification, sign a liability waiver, and wear appropriate clothing and closed toed shoes. If any participant attending any part of the site visit is disabled or has special needs, please send an e-mail to Oconee Relicensing at g2oconeerel@southernco.com.

The scoping meetings will be recorded by a court reporter, and all statements (verbal and written) will become part of the Commission's public record for the project. Before each meeting, all individuals who attend, especially those who intend to make statements, will be asked to sign in and clearly identify themselves for the record. Interested parties who choose not to speak or who are unable to attend the scoping meetings may provide written comments and information to the Commission as described in section 6.0, *Request for Information and Studies*. These meeting are posted on the Commission's calendar located on the internet at <http://www.ferc.gov/EventCalendar/EventsList.aspx?View=monthview>, along with other related information.

Meeting participants should come prepared to discuss their issues and/or concerns as they pertain to the relicensing of the Wallace Dam Project. It is advised that participants review the PAD in preparation for the scoping meetings. Copies of the PAD are available for review at the Commission in the Public Reference Room or may be viewed on the Commission's website (www.ferc.gov), using the "eLibrary" link. Enter the docket number, P-2413, to access the documents. For assistance, contact FERC Online Support at FERCONlineSupport@ferc.gov, or toll free at 1-866-208-3676, or for TTY, (202) 502-8659. A copy of the PAD is also available for inspection and reproduction at <http://www.georgiapower.com/about-energy/energy-sources/hydro->

power/hydro-projects/wallace/home.cshtml, or at the following address: Courtenay O'Mara, Hydro Relicensing Project Manager, Southern Company Generation, Bin 10193, 241 Ralph McGill Boulevard, NE, Atlanta, Georgia 30308-3374.

Following the scoping meetings and comment period, all issues raised will be reviewed and decisions made on the level of analysis needed. If preliminary analysis indicates that any issues presented in this scoping document have little potential for causing significant effects, the issue(s) will be identified and the reasons for not providing a more detailed analysis will be given in the EA.

If we receive no substantive comments on SD1, we will not prepare a Scoping Document 2 (SD2). Otherwise, we will issue SD2 to address any substantive comments received. The SD2 will be issued for informational use only; no response will be required. The EA will address recommendations and input received during the scoping process.

3.0 PROPOSED ACTION AND ALTERNATIVES

In accordance with NEPA, the environmental analysis will consider the following alternatives, at a minimum: (1) the no-action alternative, (2) the applicant's proposed action, and (3) alternatives to the proposed action.

3.1 NO-ACTION ALTERNATIVE

Under the no-action alternative, the Wallace Dam Project would continue to operate as required by the current project license (*i.e.*, there would be no change to the existing environment). No new environmental protection, mitigation, or enhancement measures would be implemented. We use this alternative to establish baseline environmental conditions for comparison with other alternatives.

3.1.1 Existing Project Facilities

The existing Wallace Dam Project consists of a 2,395-foot-long, 118-foot-high dam that is composed of: (1) a 347-foot-long west earth embankment; (2) a 300-foot-long west concrete non-overflow section; (3) a 266-foot-long concrete spillway with five Taintor gates; (4) a 531-foot-long powerhouse intake section leading to six 25.5-foot-diameter penstocks; (5) a 226-foot-long east concrete non-overflow section; (6) a 725-foot-long east earth embankment; and (7) two saddle dikes totaling 900 feet in length. The powerhouse is integral with the dam and contains six 52.2-MW turbine/generator units, two of which are conventional generating units and four are reversible pump units. The total installed capacity is 321.3 MW.

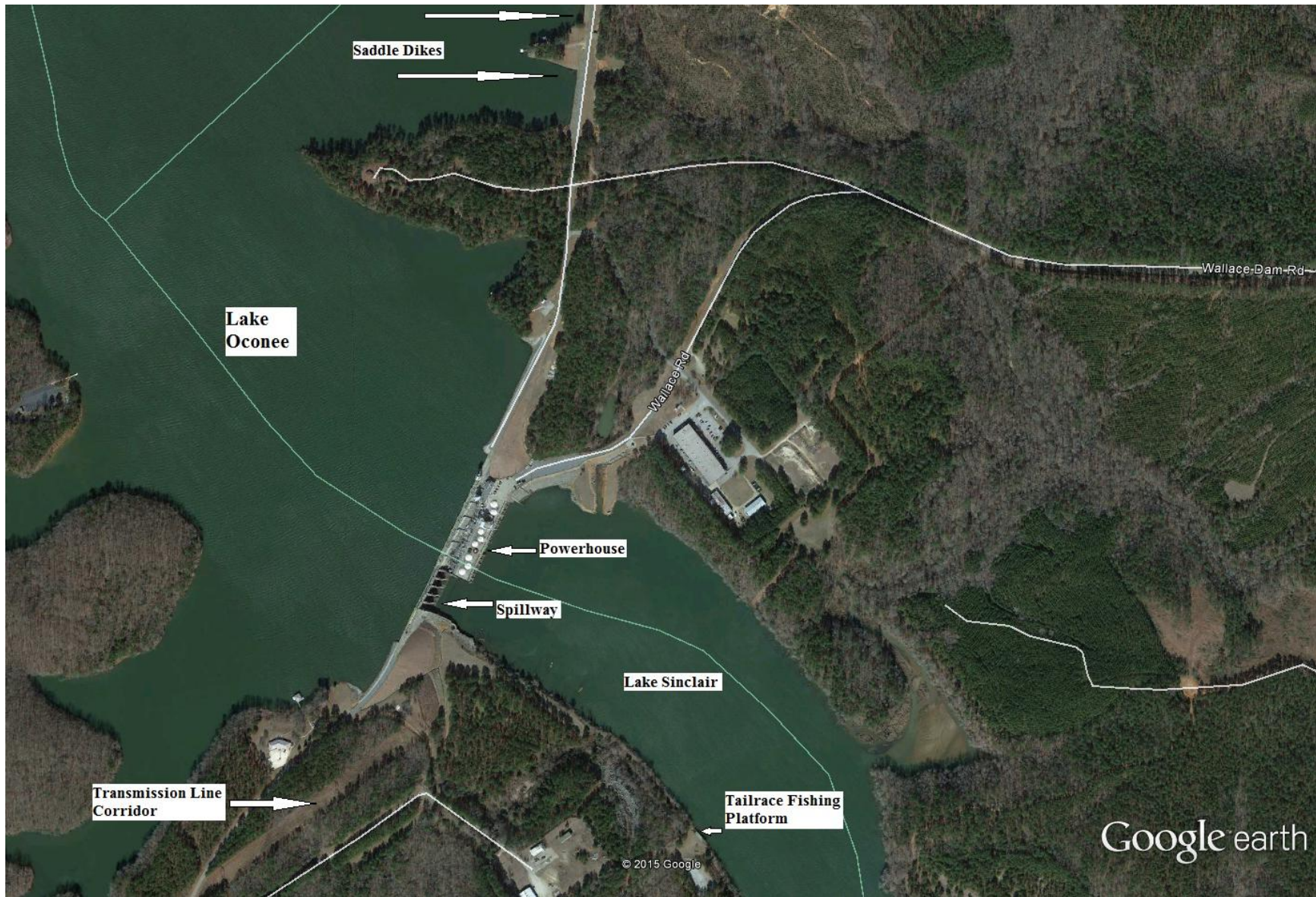


Figure 2. Project facilities for the Wallace Dam Project. (Source: PAD, as modified by staff).

The project reservoir (Lake Oconee) has 374 miles of shoreline and a surface area of 19,050 acres at elevation 435 feet plant datum.⁵ The project discharges to a 20,000-foot-long tailrace that flows into Lake Sinclair, which serves as the lower reservoir for the Wallace Dam Project.

Georgia Power owns, operates, and maintains, or provides for the operation and maintenance of, seven project recreation sites as part of the Wallace Dam Project. The facilities provide a total of six boat ramps, eight docks, three campgrounds, three swimming beaches, about 375 parking spaces, and associated amenities that include restrooms, picnic areas, playgrounds, and trails. Amenities at the Tailrace Fishing Area include a fishing platform and parking area.

Electricity generated by the Wallace Dam Project is transmitted overland from the dam to its interconnection with the grid. The transmission facilities consist of: (1) 13.8-kilovolt (kV) generator leads; (2) two 13.8/230-kV step-up transformers; (3) a 230-kV substation; and (4) a 15.67-mile-long transmission line. The transmission line begins at Wallace Dam and extends west to a switching station in the vicinity of Eatonton, Georgia (*see* figure 1).

3.1.2 Existing Project Operation

Normal Operation

The Wallace Dam Project is a pumped storage project, with Lake Sinclair serving as the project's lower reservoir.⁶ Water for generation at Wallace Dam comes from inflow, plus storage in Lake Oconee. Wallace Dam generates during peak power demand hours to meet the electrical system demand. Some of this water passes downstream from hydropower generation at the Sinclair Project. The remaining volume of water from Wallace Dam remains in Lake Sinclair for a few hours before being pumped back into Lake Oconee by the four reversible units for reuse in the next day's generation cycle. Pumpback operations occur at night, when electrical system demand is low (*i.e.*, off-peak hours).

For normal day-to-day operation, Lake Oconee fluctuates between elevation 435 feet, which is full pond, and elevation 433.5 feet. Lake Oconee typically starts near

⁵ Plant datum equals mean sea level (NAVD88) minus 0.20 feet (+/-0.01 feet). Unless otherwise stated, all elevations referenced in SD1 are in plant datum.

⁶ The Wallace Dam Project also serves as a black-start facility for Georgia Power, meaning that it is capable of being used to restore electricity to the nearby system should a major generating facility go off-line.

elevation 435 feet before the Wallace dam generation cycle, and ends near elevation 433.5 feet. During the night-time pumping cycle, Lake Oconee typically refills up to elevation 435 feet. Depending on power demand, the reservoir may not fluctuate the full amount on a daily basis. The average daily fluctuation in Lake Oconee is 1.5 feet.

Wallace Dam discharges directly into Lake Sinclair, with no intervening riverine or bypassed reach. For the period 1997 – 2013, daily average discharge exceeded 0 cubic feet per second (cfs) 85 percent of the time and 1,000 cfs 64 percent of the time.

The majority of the annual generation at the project comes from the reuse of water pumped back into Lake Oconee at night. Generation typically is the highest during the summer months, where Wallace Dams generates for about 7 to 8 hours during the afternoon peak demand period. During the fall and winter months, generation typically last 5 to 6 hours.

Drought Operation

The Wallace Dam Project supports the minimum flow requirements of the downstream Sinclair Project during drought. When the Sinclair Project's calculated inflow drops below 250 cfs,⁷ water is released from Lake Oconee to maintain Lake Sinclair at the minimum level necessary for safe pumpback operation at Wallace Dam.⁸

3.2 APPLICANT'S PROPOSAL

3.2.1 Proposed Project Facilities and Operations

Georgia Power proposes to continue operating the Wallace Dam Project as it is currently operated, as a pumped storage project. No new or upgraded facilities, structural changes, or operation changes to the Wallace Dam Project during the term of the new license are proposed at this time.

3.2.2 Proposed Environmental Measures

Georgia Power identified some measures to protect and enhance environmental resources of the project area. Georgia Power proposes, at this time, the following protection, mitigation, and enhancement (PM&E) measures for the Wallace Dam Project. Georgia Power may propose additional PM&E measures pending the results of

⁷ The Sinclair Project has an absolute minimum flow requirement of 250 cfs.

⁸ The normal minimum pond level at Lake Sinclair is 338.2 feet, and the pump units at Wallace Dam begin to cavitate at elevation 337.2 feet.

environmental studies conducted to support relicensing, and subsequent analysis and consultation with resource agencies and other relicensing participants.

Geologic and Soil Resources

- Continue to take reasonable measures to prevent soil erosion on lands adjacent to the stream and to prevent stream siltation or pollution resulting from project construction, operation, or maintenance.

Aquatic Resources

Georgia Power currently implements the following aquatic resource PM&E measures:

- Operate and maintain existing gages and gaging stations in project-affected reaches to document and verify project operation.
- Collect seasonal water quality data within Lake Oconee.

Terrestrial Resources

Georgia Power currently implements the following terrestrial resource PM&E measures:

- Maintain the transmission line corridor by implementing vegetation management practices.
- An existing timber and land management program on undeveloped lands within the project boundary.
- Maintain existing wood duck boxes and osprey nesting platforms installed at the project.

Threatened and Endangered Species

There are no existing or proposed PM&E measures related to threatened and endangered species for the project.

Recreation and Land Use

Georgia Power currently implements the following recreation and land use PM&E measures:

- A Shoreline Management Program for the Wallace Dam Project that includes four key elements: policies and permitting;⁹ resources; land use; and communication.
- Operate and maintain the seven existing project recreation sites, including Armour Bridge, Lawrence Shoals Park, Long Shoals Boat Ramp, Old Salem Park, Parks Ferry Park, Sugar Creek Boat Ramp, and the Tailrace Fishing Area.

Cultural Resources

- Develop a historic properties management plan and implement a Programmatic Agreement for the project.

3.3 ALTERNATIVES TO THE PROPOSED ACTION

Commission staff will consider and assess all alternative recommendations for operational or facility modifications, as well as environmental measures identified by staff, federal and state agencies, Indian tribes, NGOs, and the public.

3.4 ALTERNATIVES CONSIDERED BUT ELIMINATED FROM DETAILED STUDY

At present, we propose to eliminate the following alternatives from detailed study in the EA.

3.4.1 Federal Government Takeover

In accordance with 18 C.F.R. § 16.14 of the Commission's regulations, a federal department or agency may file a recommendation that the United States exercise its right to take over a hydroelectric power project with a license that is subject to sections 14 and 15 of the FPA.¹⁰ We do not consider federal takeover to be a reasonable alternative.

⁹ The policies and permitting activities are governed by: the current license's standard land use article; U.S. Army Corps of Engineers Programmatic General Permits, as well as state and local regulations; and Georgia Power's Wallace Dam Shoreline Management Guidelines.

¹⁰ 16 U.S.C. §§ 791(a)-825(r).

Federal takeover of the project would require congressional approval. While that fact alone would not preclude further consideration of this alternative, there is currently no evidence showing that federal takeover should be recommended to Congress. No party has suggested that federal takeover would be appropriate, and no federal agency has expressed interest in operating the project.

3.4.2 Non-power License

A non-power license is a temporary license the Commission would terminate whenever it determines that another governmental agency is authorized and willing to assume regulatory authority and supervision over the lands and facilities covered by the non-power license. At this time, no governmental agency has suggested a willingness or ability to take over the project. No party has sought a non-power license, and we have no basis for concluding that the Wallace Dam Project should no longer be used to produce power. Thus, we do not consider a non-power license a reasonable alternative to relicensing the project.

3.4.3 Project Decommissioning

Decommissioning of the project could be accomplished with or without dam removal. Either alternative would require denying the relicense application and surrender or termination of the existing license with appropriate conditions. There would be significant costs involved with decommissioning the project and/or removing any project facilities. The project provides a viable, safe, and clean renewable source of power to the region. With decommissioning, the project would no longer be authorized to generate power.

No party has suggested project decommissioning would be appropriate in this case, and we have no basis for recommending it. Thus, we do not consider project decommissioning a reasonable alternative to relicensing the project with appropriate environmental measures.

4.0 SCOPE OF CUMULATIVE EFFECTS ANALYSIS AND RESOURCE ISSUES

4.1 CUMULATIVE EFFECTS

According to the Council on Environmental Quality's regulations for implementing NEPA (40 C.F.R., § 1508.7), a cumulative effect is the impact on the environment that results from the incremental effect of the action when added to other past, present, and reasonably foreseeable future actions, regardless of what agency (federal or non-federal) or person undertakes such other actions. Cumulative effects can result from individually minor, but collectively significant, actions taking place over a period of time, including hydropower and other land and water development activities.

4.1.1 Resources That Could Be Cumulatively Affected

Based on information in the PAD and preliminary staff analysis, we have not identified any resources that may be cumulatively affected by the proposed continued operation and maintenance of the project.

4.1.2 Geographic Scope

Our geographic scope of analysis for cumulatively affected resources is defined by the physical limits or boundaries of: (1) the proposed action's effect on the resources; and (2) contributing effects from other hydropower and non-hydropower activities within the Oconee River Basin. Because the proposed action would affect the resources differently, the geographic scope for each resource may vary.

We have not yet identified the geographic scope for our environmental analysis. Therefore, for any resources that participants recommend we analyze for cumulative effects, we ask that they also recommend the geographic scope they think is appropriate.

4.1.3 Temporal Scope

The temporal scope of our cumulative effects analysis in the EA will include a discussion of the past, present, and reasonably foreseeable future actions and their effects on each resource that could be cumulatively affected. Based on the potential term of a new license, the temporal scope will look 30 to 50 years into the future, concentrating on the effect on the resources from reasonably foreseeable future actions. The historical discussion will be limited, by necessity, to the amount of available information for each resource. The quality and quantity of information, however, diminishes as we analyze resources further away in time from the present.

4.2 RESOURCE ISSUES

In this section, we present a preliminary list of environmental issues to be addressed in the EA. We identified these issues, which are listed by resource area, by reviewing the PAD and the Commission's record for the Wallace Dam Project. This list is not intended to be exhaustive or final, but contains those issues raised to date that could have substantial effects. After the scoping process is complete, we will review the list and determine the appropriate level of analysis needed to address each issue in the EA.

We have not identified substantive issues related to aesthetics and socioeconomics, and, therefore, do not intend on conducting a detailed analysis of these resources.

4.2.1 Geologic and Soils Resources

- Effects of continued project operation and project-related recreation on reservoir and tailrace shoreline erosion and sedimentation.

4.2.2 Aquatic Resources

Water Quality

- Effects of continued project operation on water quality, including water temperature and dissolved oxygen concentrations, in Lake Oconee and the tailrace area.

Fisheries

- Effects of continued project operation, non-project use of project lands (*e.g.*, water supply intakes) and shoreline permitting (*e.g.*, docks, seawalls, etc.) on fish habitat and aquatic resources in Lake Oconee.
- Effects of continued project operation on summer habitat for sport fish species, including largemouth bass and stocked striped bass, in Lake Oconee.
- Effects of continued project operation on tributary riverine fish and mussel habitat.
- Effects of continued project operation on aquatic habitat in the project tailrace area.
- Effects of continued project operation on fish entrainment and turbine-induced mortality.
- Aquatic non-native invasive species and their effects on native flora and fauna within the project boundary.
- Effects of continued project operation on state species of concern in the vicinity of the proposed project.

4.2.3 Terrestrial Resources

- Upland non-native invasive species and their effects on native flora and fauna within the project boundary.

- Effects of continued project operation, maintenance, project-related recreation, and non-project use of project lands (*e.g.*, boat docks) on upland habitat, reservoir wetland and littoral habitats, and associated wildlife.
- Effects of continued project operation, maintenance, and project-related recreation on state species of concern in the vicinity of the proposed project, including bald eagle.

4.2.4 Threatened and Endangered Species

- Effects of continued project operation, maintenance, and project-related recreation on federally threatened or endangered species and their habitat in the vicinity of the proposed project, including the endangered black-spored quillwort, mat-forming quillwort, harperella, and red-cockaded woodpecker, and the threatened pool sprite.

4.2.5 Recreation and Land Use

- Effects of the average daily 1.5-foot fluctuation of Lake Oconee on recreational opportunities at the project, including use of existing boat launches.
- Effects of continued project operation on downstream recreational use in the project tailrace fishing area.
- Adequacy of existing public access and recreational facilities in the project boundary to meet current and future recreation demand, including special events (*e.g.*, fishing tournaments) at the project.
- Adequacy of the existing Shoreline Management Program to address land use practices, including erosion, and protect environmental resources within the project boundary.

4.2.6 Cultural Resources

- Effects of continued project operation and maintenance on properties that are included in or eligible for inclusion in the National Register of Historic Places.
- Effects of continued project operation and maintenance on archeological and historic resources at the project.

4.2.7 Developmental Resources

- Effects of the proposed project and alternatives, including any recommended PM&E measures, on project generation and economics.

5.0 PROPOSED STUDIES

The following are Georgia Power's list of potential studies that it deems necessary to help determine the environmental effects associated with relicensing the Wallace Dam Project. Additional studies may be needed based on comments provided by Commission staff, federal and state resource agencies, Indian tribes, and other interested participants.

Georgia Power has not identified any issues relating to aesthetic, socio-economics, or tribal resources. Therefore, no studies are proposed for these resource areas. The potential studies identified by Georgia Power, as listed below, are organized by resource area.

Resource Area	Study Plan
1. Geology and Soils	Characterize the distribution and sources of erosion and sedimentation within the project reservoir, based on a shoreline field reconnaissance survey, as well as review and analysis of existing information and aerial photography. A shoreline survey would be conducted within the project boundary. A literature review and analysis would be conducted on the effects of shoreline stabilization structures on littoral-zone aquatic habitat.
2. Water Resources	Characterize water use, availability, and water quality in the project area; and characterize the effects of project operation on water quality in the project reservoir and tailrace area immediately downstream from the dam. Seasonal water quality monitoring would be conducted in the project reservoir through 2016, including vertical profiles and water chemistry. Dissolved oxygen and water temperature would be continuously monitored in the project tailrace through 2016. A literature review would be conducted for water quantity and quality.

Resource Area	Study Plan
3. Fish and Aquatic Resources	Characterize representative shoreline and littoral-zone aquatic habitats occurring throughout the reservoir. A shoreline habitat survey would be conducted to characterize physical aquatic habitat and available sources of littoral-zone cover for fish.
4. Fish and Aquatic Resources	Evaluate the occurrence and distribution of Altamaha shiner and native mussels within the project boundary. Existing data on Altamaha shiner and native mussel occurrence and habitat use within the project boundary would be reviewed and analyzed.
5. Fish and Aquatic Resources	Evaluate the effects of continued project operation on summer reservoir water quality and habitat for largemouth bass and stocked striped bass. Existing fishery survey data (primary sport fish) for the project reservoir would be analyzed; and, based on existing data, water quality effects in the project reservoir on the growth of largemouth bass and striped bass would be analyzed.
6. Fish and Aquatic Resources	Evaluate the potential for fish entrainment and turbine-induced mortality by applying trends and data from entrainment studies completed at other hydroelectric projects to the physical, operational, and fisheries characteristics of the Wallace Dam Project.
7. Terrestrial Resources	Conduct a survey in the project boundary and adjacent lands to describe terrestrial wildlife and botanical resources, including lists of plant and animal species that use representative habitats, and to identify invasive species.
8. Terrestrial Resources	Conduct a survey in the project boundary and review existing information to describe the floodplain, wetlands, riparian habitats, and littoral habitats occurring in the project boundary, including lists of representative plant and animal species; identify invasive species; and prepare a map delineating wetland, riparian, and littoral habitat.

Resource Area	Study Plan
9. Threatened and Endangered Species	Develop a list of species known to occur near the project; conduct a survey in the project boundary and adjacent lands to identify suitable habitats within the study area; and describe species distribution and habitat use based on habitat requirements, findings of field surveys, and consultation with resource agencies.
10. Recreation and Land Use	Review existing information to describe recreation, land use, and visual aesthetic qualities in the Wallace Dam Project area; characterize current types and levels of recreational use on the reservoir and in the tailrace area; and evaluate the need for additional recreational access or facilities at the project. The study effort would include: (a) review and analysis of campground surveys and use information; (b) compilation and analysis of the Licensed Hydropower Development Recreation Report (Form 80) data; (c) review and analysis of fish tournament data and Forest Service use data; and (d) an assessment of the adequacy of existing facilities.
11. Cultural Resources	Identify known historic resources through literature site file review; determine if any historic properties are eligible for listing on the National Register of Historic Places; and evaluate the potential for effects upon historic properties by the continued operation of the project or by activities conducted along the project reservoir. The study effort would entail further assessment of sites being monitored by Georgia Power to assess effectiveness of current management plan; and photographic documentation of the project dam, powerhouse, and associated equipment.

6.0 REQUEST FOR INFORMATION AND STUDIES

We are asking federal, state, and local resource agencies, Indian tribes, NGOs, and the public to forward to the Commission any information that may assist us in conducting an accurate and thorough analysis of the project-specific and cumulative effects associated with relicensing the Wallace Dam Project. The types of information requested include, but are not limited to:

- information, quantitative data, or professional opinions that may help define the geographic and temporal scope of the analysis (both project-specific and cumulative effects), and that help identify significant environmental issues;
- identification of, and information from, any other EA, EIS, or similar environmental study (previous, on-going, or planned) relevant to the proposed relicensing of the Wallace Dam Project;
- existing information and any data that would help to describe the past and present actions and effects of the project and other developmental activities on environmental and socioeconomic resources;
- information that would help characterize the existing environmental conditions and habitats;
- identification of any federal, state, or local resource plans, and any future project proposals in the affected resource area (*e.g.*, proposals to construct or operate water treatment facilities, recreation areas, water diversions, timber harvest activities, or fish management programs), along with any implementation schedules;
- documentation that the proposed project would or would not contribute to cumulative adverse or beneficial effects on any resources. Documentation can include, but need not be limited to, how the project would interact with other projects in the area and other developmental activities; study results; resource management policies; and reports from federal and state agencies, local agencies, Indian tribes, NGOs, and the public; and
- documentation showing why any resources should be excluded from further study or consideration.

All requests for studies filed with the Commission must meet the criteria found in Appendix A, *Study Plan Criteria*.

The requested information, comments, and study requests should be submitted to the Commission no later than June 19, 2015. The Commission strongly encourages electronic filing. Please file all documents using the Commission's eFiling system at <http://www.ferc.gov/docs-filing/efiling.asp>. Commenters can submit brief comments up to 6,000 characters, without prior registration, using the eComment system at <http://www.ferc.gov/docs-filing/ecomment.asp>. You must include your name and contact information at the end of your comments. For assistance, please contact FERC Online Support at FERCOnlineSupport@ferc.gov, or toll free at 1-866-208-3676, or for TTY, (202) 502-8659. Although the Commission strongly encourages electronic filing,

documents may also be paper-filed. To paper file, mail an original and five copies to: Kimberly D. Bose, Secretary, Federal Energy Regulatory Commission, 888 First Street, NE, Washington, D.C. 20426. All filings must clearly identify the project name and docket number on the first page (e.g., Wallace Dam Project, P-2413-117).

Register online at <http://www.ferc.gov/esubscription.asp> to be notified via email of new filings and issuances related to this or other pending projects. For assistance, please contact FERC Online Support.

Questions concerning the scoping process, preparation of the EA, or how to file written comments with the Commission should be directed to Allan Creamer at (202) 502-8365, or allan.creamer@ferc.gov. Additional information about the Commission's licensing process and the Wallace Dam Project may be obtained from the Commission's website, <http://www.ferc.gov>.

7.0 EA PREPARATION SCHEDULE

At this time, we anticipate the need to prepare a single EA. The EA will be sent to all persons and entities on the Commission's service and mailing lists for the Wallace Dam Project. The EA will include our recommendations for operating procedures, as well as PM&E measures that should be part of any license issued by the Commission. All recipients will then have 30 days to review the EA and file written comments with the Commission. All comments on the EA filed with the Commission will be considered in the preparation of the licensing order. The major milestones, including those for preparing the EA,¹¹ are as follows:

<u>Major Milestone</u>	<u>Target Date</u>
Scoping Meetings	May 2015
License Application Filed	May 2018
Ready for Environmental Analysis Notice Issued	July 2018
Deadline for Filing Comments, Recommendations, and Agency Terms and Conditions/Prescriptions	September 2018
EA Issued	January 2019
Comments on EA Due	February 2019

¹¹ This schedule assumes that a single EA would be prepared. If a draft and final EA or EIS is prepared the target dates for comments on the draft EA or EIS and deadline for filing modified agency recommendations may need to be revised.

If the Commission staff determines that there is a need for additional information or additional studies, the issuance of the Ready for Environmental Analysis notice could be delayed. If this occurs, all subsequent milestones would be delayed by the time allowed for Georgia Power to respond to the Commission's request. A copy of Georgia Power's pre-filing portion of the process plan, which has a complete list of the milestones for developing the license application for the Wallace Dam Project, is attached as Appendix B to this SD1.

8.0 PROPOSED EA OUTLINE

The preliminary outline for the proposed Wallace Dam Project EA is as follows:

TABLE OF CONTENTS

LIST OF FIGURES

LIST OF TABLES

ACRONYMS AND ABBREVIATIONS

EXECUTIVE SUMMARY

1.0 INTRODUCTION

1.1 Application

1.2 Purpose of Action and Need For Power

1.2.1 Purpose of Action

1.2.2 Need for Power

1.3 Statutory and Regulatory Requirements

1.3.1 Federal Power Act

1.3.1.1 Section 4(e) Conditions

1.3.1.2 Section 18 Fishway Prescriptions

1.3.1.3 Section 10(j) Recommendations

1.3.2 Clean Water Act

1.3.3 Endangered Species Act

1.3.4 Coastal Zone Management Act

1.3.5 National Historic Preservation Act

1.3.6 Other Regulatory Requirements

1.4 Public Review and Comment

1.4.1 Scoping

1.4.2 Interventions

1.4.3 Comments on the Application

2.0 PROPOSED ACTION AND ALTERNATIVES

2.1 No-action Alternative

2.2 Proposed Action

2.2.1 Proposed Project Facilities

2.2.2 Project Safety

2.2.3 Proposed Project Operation

- 2.2.4 Proposed Environmental Measures
- 2.2.5 Modifications to Applicant’s Proposal—Mandatory Conditions
- 2.3 Staff Alternative
- 2.4 Staff Alternative with Mandatory Conditions
- 2.5 Other Alternatives (as appropriate)
- 2.6 Alternatives Considered but Eliminated From Detailed Analysis
- 3.0 ENVIRONMENTAL ANALYSIS
 - 3.1 General Description of the River Basin
 - 3.2 Scope of Cumulative Effects Analysis
 - 3.2.1 Geographic Scope
 - 3.2.2 Temporal Scope
 - 3.3 Proposed Actions and Action Alternatives
 - 3.3.1 Geologic and Soil Resources
 - 3.3.2 Aquatic Resources
 - 3.3.3 Terrestrial Resources
 - 3.3.4 Threatened and Endangered Species
 - 3.3.5 Recreation and Land Use
 - 3.3.6 Cultural Resources
 - 3.4 No-action Alternative
- 4.0 DEVELOPMENTAL ANALYSIS
 - 4.1 Power and Economic Benefits of the Project
 - 4.2 Comparison of Alternatives
 - 4.3 Cost of Environmental Measures
- 5.0 CONCLUSIONS AND RECOMMENDATIONS
 - 5.1 Comprehensive Development and Recommended Alternative
 - 5.2 Unavoidable Adverse Effects
 - 5.3 Recommendations of Fish and Wildlife Agencies
 - 5.4 Consistency with Comprehensive Plans
- 6.0 FINDING OF NO SIGNIFICANT IMPACT (OR OF SIGNIFICANT IMPACT)
- 7.0 LITERATURE CITED
- 8.0 LIST OF PREPARERS

9.0 COMPREHENSIVE PLANS

Section 10(a)(2) of the FPA requires the Commission to consider the extent to which a project is consistent with federal or state comprehensive plans for improving, developing, or conserving a waterway or waterways affected by the projects.¹² Commission staff has preliminarily identified and reviewed the plans listed below that may be applicable to the Wallace Dam Project. Agencies are requested to review this list and inform the staff of any changes. If there are other comprehensive plans that should

¹² 16 U.S.C. § 803(a)(2)(A) (2012).

be considered for this list that are not on file with the Commission, or if there are more recent versions of the plans already listed, they can be filed for consideration with the Commission according to 18 C.F.R. 2.19 of the Commission's regulations. Please follow the instructions for filing a plan at <http://www.ferc.gov/industries/hydropower/gen-info/licensing/complan.pdf>.

The following is a list of comprehensive plans currently on file with the Commission that may be relevant to the Wallace Dam Project:¹³

Atlantic States Marine Fisheries Commission. 1998. Amendment 1 to the Interstate Fishery Management Plan for Atlantic sturgeon (*Acipenser oxyrinchus oxyrinchus*). (Report No. 31). July 1998.

Atlantic States Marine Fisheries Commission. 1999. Amendment 1 to the Interstate Fishery Management Plan for shad and river herring. (Report No. 35). April 1999.

Atlantic States Marine Fisheries Commission. 2000. Technical Addendum 1 to Amendment 1 of the Interstate Fishery Management Plan for shad and river herring. February 9, 2000.

Atlantic States Marine Fisheries Commission. 2009. Amendment 2 to the Interstate Fishery Management Plan for shad and river herring, Arlington, Virginia. May 2009.

Atlantic States Marine Fisheries Commission. 2010. Amendment 3 to the Interstate Fishery Management Plan for shad and river herring, Arlington, Virginia. February 2010.

Atlantic States Marine Fisheries Commission. 2000. Interstate Fishery Management Plan for American eel (*Anguilla rostrata*). (Report No. 36). April 2000.

Georgia Department of Natural Resources. 1985. Water availability and use - Oconee River Basin. Atlanta, Georgia.

Georgia Department of Natural Resources. 1985. Water availability and use - Ocmulgee River Basin. Atlanta, Georgia.

¹³ Though not listed as a comprehensive plan for Georgia, Commission staff also plans to review: U.S. Fish and Wildlife Service. Canadian Wildlife Service. 1986. North American waterfowl management plan. Department of the Interior. Environment Canada. May 1986.

- Georgia Department of Natural Resources. Georgia Statewide Comprehensive Outdoor Recreation Plan (SCORP): 2008-2013. Atlanta, Georgia.
- Georgia Department of Natural Resources. 1986. Water availability and use report - Altamaha River Basin. Atlanta, Georgia. March 1986.
- Metropolitan North Georgia Water Planning District. 2003. Water supply and water conservation management plan. Atlanta, Georgia. September 2003.
- Metropolitan North Georgia Water Planning District. 2003. Long-term wastewater management plan. Atlanta, Georgia. September 2003.
- Metropolitan North Georgia Water Planning District. 2003. District-wide watershed management plan. Atlanta, Georgia. September 2003.
- National Marine Fisheries Service. 1998. Final Recovery Plan for the shortnose sturgeon (*Acipenser brevirostrum*). Prepared by the Shortnose Sturgeon Recovery Team for the National Marine Fisheries Service, Silver Spring, Maryland. December 1998.
- State of Georgia. Office of the Governor. 1987. Water resources management strategy-summary document. Atlanta, Georgia. January 12, 1987.
- U.S. Fish and Wildlife Service. National Marine Fisheries Service. Georgia Department of Natural Resources. 2013. Priority restoration and management actions for the American shad in the Altamaha River Basin, Georgia. Athens, Georgia. 2013.
- U.S. Fish and Wildlife Service. n.d. Fisheries USA: the recreational fisheries policy of the U.S. Fish and Wildlife Service. Washington, D.C.

10.0 MAILING LIST

The list below is the Commission's official mailing list for the Wallace Dam Project. If you want to receive future mailings for this proceeding and are not included in the list below, please send your request by email to efiling@ferc.gov, or by mail to: Kimberly D. Bose, Secretary, Federal Energy Regulatory Commission, 888 First Street, N.E., Room 1A, Washington, DC 20426. All written and emailed requests to be added to the mailing lists must clearly identify the following on the first page: Wallace Dam Project (FERC No. 2413-117). You may use the same method if requesting removal from the mailing list.

Register online at <http://www.ferc.gov/docs-filing/esubscription.asp> to be notified via email of new filings and issuances related to this project or other pending projects.

For assistance, please contact FERC Online Support at FERCOnlineSupport@ferc.gov, or toll free at 1-866-208-3676, or for TTY, (202) 502-8659.

Mailing List for Wallace Dam Pumped Storage Project,
FERC Project No. 2413-117

U.S. Senate Honorable Chambliss Saxby 416 Russell Senate Office Building Washington, DC 20510	U.S. Senate Honorable Johnny Isakson 131 Russell Senate Office Building Washington, DC 20510
U.S. House of Representatives Honorable John Linder Washington, DC 20515	U.S. House of Representatives Honorable Charles W. Norwood Washington, DC 20515
Commander U.S. Coast Guard, 7th District 909 SE 1st Ave. Miami, FL 33131-3050	Race Luce, Director Georgia Historic Preservation Division 47 Trinity Ave SW, Ste. 414-H Atlanta, GA 30334-9006
District Engineer U.S. Army Corps of Engineers Savannah District 100 West Oglethorpe Avenue Savannah, GA 31401-3604	Dr. David Crass Georgia Department of Natural Resources- Historic Preservation Division 254 Washington Street, SW Ground Level Atlanta, GA 30334
U.S. Army Corps of Engineers 550 Main Street Cincinnati, OH 45202	Charlies Yanny U.S. Army Corps of Engineers Mobile District Mobile, AL 36628
Lonice C. Barrett Georgia Department of Natural Resources- Parks and Historic Sites Division 2 Martin Luther King Jr. Dr., SE, Ste. 1252 Atlanta, GA 30334	Alice Lawrence U.S. Fish and Wildlife Service 105 Westpark Drive Athens, GA 30606
Georgia Geologic Survey Department of Natural Resources/EPD 19 Martin Luther King Jr. Dr., SW Atlanta, GA 30334-9004	Georgia State Soil & Water Conservation Commission P.O. Box 8024 Athens, GA 30603
Director U.S. Fish & Wildlife Service Georgia Field Office 105 Westpark Drive, Westpark Ct., Ste. D Athens, GA 30606	Director Georgia Natural Heritage Program 2065 U.S. Hwy., 278 SE Social Circle, GA 30025

<p>Georgia Office of Planning & Budget 270 Washington St., SW Atlanta, GA 30334-9009</p>	<p>Attorney General Georgia Office of Attorney General 40 Capitol Sq., SW Atlanta, GA 30334-9003</p>
<p>Georgia Forestry Commission 5645 Riggins Mill Road Dry Branch, GA 31020</p>	<p>Georgia Department of Agriculture 19 Martin Luther King Jr. Dr., SW Atlanta, GA 30334</p>
<p>John Moore USDA Forest Service Oconee National Forest 1199 Madison Rd. Eatonton, GA 31024-5923</p>	<p>Betty Jewett U.S. Forest Service Chattahoochee-Oconee National Forest 1755 Cleveland Highway Gainesville, GA 30501</p>
<p>Georgia Department of Natural Resources - Environmental Protection Division 205 Butler St., SE, Ste. 1152 Atlanta, GA 30334-9041</p>	<p>USDA Forest Service Regional Forester, Southern Region 1720 Peachtree Rd., NW Atlanta, GA 30309</p>
<p>Bruce Dawson U.S. Bureau of Land Management Eastern States Field Office 411 Briarwood Dr., Ste. 404 Jackson, MS 39206</p>	<p>Dr. John Ehrehard U.S. National Park Service 100 Alabama St., SW Atlanta, GA 30303-8701</p>
<p>George Martin, Supervisor U.S. Department of Agriculture 1755 Cleveland Hwy. Gainesville, GA 30501-1300</p>	<p>Dick Jones U.S. Department of Agriculture 1720 Peachtree St., NW, Ste. 800 Atlanta, GA 30309-2449</p>
<p>Sandra S. Tucker U.S. Fish & Wildlife Service 105 Westpark Dr., Westpark Center, Ste. D Athens, GA 30606-3175</p>	<p>Dan Holliman U.S. Environmental Protection Agency Region 4 61 Forsyth Street, SW Atlanta, GA 30303</p>
<p>Elizabeth Booth Georgia Department of Natural Resources - Environmental Protection Division 2 Martin Luther King, Jr. Dr., SW Ste.1152 Atlanta, GA 30334</p>	<p>Ted Bisterfeld U.S. Environmental Protection Agency Environmental Accountability Division 61 Forsyth St., SW, Floor 13 Atlanta, GA 30303-8931</p>
<p>Marshall Gaddis, Manager Georgia Water Quality Management – Environmental Protection Division 7 Martin Luther King Jr. Dr., SW. Ste. 643 Atlanta, GA 30334-9004</p>	<p>Terry Johnson, Manager Georgia Non-Game Endangered Wildlife Program 2070 US Hwy. 278, SE Social Circle, GA 30025</p>

Napoleon Caldwell Georgia Department of Natural Resources– Environmental Protection Division 205 Butler St., SE, Ste. 1152 Atlanta, GA 30334-9041	Lonice C. Barrett Georgia Department of Natural Resources- Environmental Protection Division 2 Martin Luther King Jr. Dr., SE, Ste. 1252 Atlanta, GA 30334
Richard Kloos, Director Georgia Department of Natural Resources 205 Butler St., SE, Ste. 1152 Atlanta, GA 30334-9041	Joe D. Tanner, Commissioner Georgia Department of Natural Resources- Environmental Protection Division 205 Butler St., SE, Ste. 1152 Atlanta, GA 30334-9041
John Biagi Georgia Department of Natural Resources- Wildlife Resources Division 2070 US Hwy. 278, SE Social Circle, GA 30025	Susan Shipman Georgia Department of Natural Resources- Coastal Resources Division 1 Conservation Way Brunswick, GA 31520-8686
Principal Chief Michell Hicks Eastern Band of Cherokee Indians P.O. Box 455 Cherokee, NC 28719	Tyler Howe, THPO Eastern Band of Cherokee Indians P.O. Box 455 Cherokee, NC 28719
Principal Chief Bill John Baker Cherokee Nation P.O. Box 948 Tahlequah, OK 74465	Principal Chief George Tiger Muscogee (Creek) Nation P.O. Box 580 Okmulgee, OK 74447
Emman Spain, THPO Muscogee (Creek) Nation P.O. Box 580 Okmulgee, OK 74447	Chief George Wickliffe United Keetoowah Band of Cherokee Indians P.O. Box 746 Tahlequah, OK 74465
Lisa C. Baker, Acting THPO United Keetoowah Band of Cherokee Indians P.O. Box 746 Tahlequah, OK 74465	Georgia Public Service Commission 244 Washington St., SW Atlanta, GA 30334-9007
Chairman Hancock County Board of Commissioners 12630 Broad St. Sparta, GA 31087	Chairman Greene County Board of Commissioners 1034 Silver Drive, Ste. 201 Greensboro, GA 30642
Chairman Putnam County Board of Commissioners 117 Putnam Drive, Ste. A Eatonton, GA 31024	Chairman Morgan County Board of Commissioners 150 E. Washington St. Madison, GA 30650

Mike Phillips, Supervisor City of Greensboro, Lands Department BIN 10151 241 Ralph McGill Blvd., NE Atlanta, GA 30308-3374	Mayor John Reid 103 Beech Ave. Eatonton, GA 31024
Mayor Glenn Wright P.O. Box 362 Greensboro, GA 30642	Mayor Fred Perriman 1196 Martin Luther King Dr. Madison, GA 30650
Chairman Baldwin County Board of Commissioners 220 County Line Church Rd., SW Milledgeville, GA 31061	Mayor Richard Bentley 119 E. Hancock Street Milledgeville, GA 31061
Mayor William Evans 12630 Broad Street Sparta, GA 31087	Andy Dyar Georgia Soil and Water Conservation District – Region IV 3014 Heritage Rd., Ste. 1 Milledgeville, GA 31061
Jeff Larson, Asst. Branch Chief Upper Oconee Water Planning District Georgia Environmental Protection Division 4420 International Parkway, Ste. 101 Atlanta, GA 30354	Tim Savelle Oconee River Resource Conservation & Development Office P.O. Box 247 Watkinsville, GA 30677
Pat Topping Baldwin County Chamber of Commerce 130 S Jefferson St., Milledgeville, GA 31061	William Gibbs, Director Milledgeville-Baldwin Recreation Dept. 59 GA-22 Milledgeville, GA 31061
Richard Bertoli, President Baldwin Chamber of Commerce Grumman Aircraft 90 GA Highway 22 W Milledgeville, GA 31061-9600	Honorable Bob Walker Gas Department Dublin, GA 31021-5222
Georgia Canoeing Association P.O. Box 7023 Atlanta, GA 30357	John Seeback American Rivers 1104 14th Street, NW, Ste. 1400 Washington, DC 20005
Marty Williams Georgia Lakes Society PO Box 440994 Kennesaw, GA 30160	Georgia Wildlife Federation 11600 Hazelbrand Rd., NE Covington, GA 30014

Georgia Wilderness Society 1927 Thomas Dr, Macon, GA 31217	Baldwin Backlashers Bass Club C/O Robert W. Schneider 160 Forest Valley Dr. Gordon, GA 31031-2115
Alan Mazza, Executive Director Heart of Georgia Altamaha Regional Commission 5405 Oak St. Eastman, GA 31023	Samuel A. Henderson Penor Shores Homeowners Association 965 Westmoreland Ln Lawrenceville, GA 30043
Genie Strickland Sierra Club 743-B East College Ave. Decatur, GA 30030	Marguerite Daniel Citizens Advisory Council on Energy 155 Acropolis Dr., Apt. 2 Athens, GA 30605-2916
Secretary Alabama Public Service Commission PO Box 304260 Montgomery, AL 36130	William Oehme and Diane Driscoll 2100 Swords Rd Greensboro, GA 30642-2547
Manager, Gas Service Energy Services, Inc. 10055 Grogans Mill Rd Parkwood II Building, Ste. 300 The Woodlands, TX 77380-1048	Terrence O'Brien Taggart, Morton, Ogden, Staub, Rougelot 1100 Poydras St., Ste. 2100 New Orleans, LA 70163-2100
Anita L Watts 1512 Raphis Royale Blvd. Englewood, FL 34223	Karl Kindig Penn, Stuart, Eskridge & Jones 110 Fairway Dr. Abingdon, VA 2421-13616
Linger Longer Development 100 Linger Longer Road Greensboro, GA 30642	Glenn Shriver C/O Dublin Industrial Services, Inc. P.O. Box 4115 Dublin, GA 31040
Lester C. and Jean W. Reed 1040 Sword Hilt Road Greensboro, GA 30642	Lynda & Neil Grant 1200 Harbor Ridge Rd Greensboro, GA 30642-5478
Larry Price 1091 Oak Valley Rd Greensboro, GA 30642-5435	William L Noll 1091 Fleming's Knoll Greensboro, GA 30642
Lionel A. Watson 263 Stewart Dr., NW Milledgeville, GA 31061-7908	Janet Pearson 117 Horseshoe Circle Eatonton, GA 31024-5317

<p>Jim Purcell 2758 Vinson Hwy., SE B Milledgeville, GA 31061-9785</p>	<p>James B. Helton 2650 Vinson Hwy., SE Milledgeville, GA 31061-9784</p>
<p>Lester Porter 404 Academy Ave. Dublin, GA 31021-5222</p>	<p>William Evans 330 E Broad St. Sparta, GA 31807</p>
<p>Ebb Hargrove 9 San Carlos Ave. Gulf Breeze, FL 32561-4142</p>	<p>Mayor George H. Gornto 116 Savannah Avenue East Dublin, GA 31027</p>
<p>Bob Williams 290 Old Plantation Trail, NW Milledgeville, GA 31061-9433</p>	<p>Courtenay R. O'Mara, P.E. Wallace Dam Relicensing Manager Southern Company Generation BIN 10193 241 Ralph McGill Blvd. Atlanta, GA 30308</p>
<p>Larry J. Wall Hydro License Coordinator Georgia Power Company BIN 10151 241 Ralph McGill Blvd. Atlanta, GA 30308</p>	<p>O. Ben Harris Vice President – Land Resources Georgia Power Company 241 Ralph McGill Blvd., NE Atlanta, GA. 30308-3374</p>
<p>R.M. Akridge Manager – Hydro Services Southern Company Energy Marketing, L.P. 600 North 18th Street Birmingham, AL 35291-8180</p>	<p>Legal Department Georgia Power Company 1516 Bartletts Ferry Rd. Fortson, GA 31808-4430</p>
<p>Scott Hendricks Land Resources Supervisor Georgia Power Company BIN 10151 241 Ralph McGill Blvd. Atlanta, GA 30308</p>	<p>George A. Martin Senior Environmental Specialist Georgia Power Company BIN 10221 241 Ralph McGill Blvd. Atlanta, GA 30308</p>
<p>Joel L. Galt, Supervisor Georgia Power Company BIN 10193 241 Ralph McGill Blvd. Atlanta, GA 30308</p>	<p>Joseph Charles Cultural Resource Specialist BIN 10151 241 Ralph McGill Blvd., NE Atlanta, GA 30308</p>
<p>Ben Emanuel Associate Director, Southeast Region American Rivers 108 East Ponce de Leon Ave. Decatur, GA 30030</p>	<p>Brian Lucy Altamaha Riverkeeper P.O. Box 2642 Darien, GA 31305</p>

Benjamin Smith Blue Springs Marina 1560 Shakerag Road Buckhead, GA 30625	John Jansen Bone Island Grill 1720 Epps Bridge Parkway Athens, GA 30606
Honorable Mickey Channell State Representative P.O. Box 839 Greensboro, GA 30642	Lori Morgan Cuscowilla HOA 126 Cuscowilla Drive Eatonton, GA 31024
Jamie Higgins U.S. Environmental Protection Agency Region 4 61 Forsyth St., SW Atlanta, GA 30303	Stephen Maurano U.S. Environmental Protection Agency Region 4 61 Forsyth St., SW Atlanta, GA 30303
Jeremy Smith Georgia Dept. of Natural Resources – Environmental Protection Division Watershed Monitoring Unit-North 7 Martin Luther King, Jr., Drive Suite 450 Atlanta, GA 30334	Jennifer Welte Georgia Dept. of Natural Resources – Environmental Protection Division Environmental Program Manager 2 Martin Luther King, Jr., Drive Suite 1152 Atlanta, GA 30334
Paul Lamarre Georgia Dept. of Natural Resources – Environmental Protection Division Environmental Engineer 2 Martin Luther King, Jr., Drive Suite 1152 Atlanta, GA 30334	Wei Zeng Georgia Dept. of Natural Resources – Environmental Protection Division Hydrology Unit 2 Martin Luther King, Jr., Drive Suite 1362 Atlanta, GA 30334
Katherine Zornig Georgia Dept. of Natural Resources – Environmental Protection Division Wetlands Unit 2 Martin Luther King, Jr., Drive Suite 450 Atlanta, GA 30334	Jeff Larson Georgia Dept. of Natural Resources – Environmental Protection Division Asst. Branch Chief 4420 International Pkwy., Suite 101 Atlanta, GA 30354
Chris Nelson Fish Biologist Georgia Dept. of Natural Resources – Wildlife Resources Division 2123 U.S. Highway 278, SE Social Circle, GA 30025	Steve Schleiger Regional Supervisor Georgia Dept. of Natural Resources – Wildlife Resources Division 1014 Martin Luther King, Jr. Drive Fort Valley, GA 31030

<p>Matt Thomas Asst. Chief of Fisheries Georgia Dept. of Natural Resources – Wildlife Resources Division 2070 U.S. Highway 278, SE Social Circle, GA 30025</p>	<p>Thom Litts Special Proj. Operations Mgr. – Fish Georgia Dept. of Natural Resources – Wildlife Resources Division 2070 U.S. Highway 278, SE Social Circle, GA 30025</p>
<p>Brett Albanese Sr. Non-game Aquatic Biologist Georgia Dept. of Natural Resources – Wildlife Resources Division 2070 U.S. Highway 278, SE Social Circle, GA 30025</p>	<p>Jason Wisniewski Aquatic Biologist Georgia Dept. of Natural Resources – Wildlife Resources Division 2070 U.S. Highway 278, SE Social Circle, GA 30025</p>
<p>Jon Ambrose Chief of Non-game Conservation Georgia Dept. of Natural Resources – Wildlife Resources Division 2070 U.S. Highway 278, SE Social Circle, GA 30025</p>	<p>Don McGowan Region Ops. Mgr. – Game Mgmt. Georgia Dept. of Natural Resources – Wildlife Resources Division 2070 U.S. Highway 278, SE Social Circle, GA 30025</p>
<p>Mark Padgett Georgia Dept. of Natural Resources 142 Bob Kirk Road Thomson, GA 30824</p>	<p>Lee Taylor Region III Supervisor Georgia Dept. of Natural Resources – Oconee Wildlife Mgmt. Area 142 Bob Kirk Road Thomson, GA 30824</p>
<p>Nick Holbrooks Georgia Dept. of Natural Resources – Oconee Wildlife Mgmt. Area 142 Bob Kirk Road Thomson, GA 30824</p>	<p>Troy Clymer District Forester Georgia Forestry Commission 119 Hwy. 49 Milledgeville, GA 31061</p>
<p>Tom Wooten Chief Ranger Georgia Forestry Commission 220 Centennial Church Road White Plains, GA 30678</p>	<p>Brandon Matney Boathouse at Harbor Club 1111 Polo circle, Ste. 101 Greensboro, GA 30642</p>
<p>Byron Lombard Manager, Green County 1034 Silver Dr., Ste. 201 Greensboro, GA 30642</p>	<p>Becky Cronic, President Greene Co. Chamber of Commerce 111 North Main St. P.O. Box 741 Greensboro, GA 30642</p>
<p>Chris Houston Greene County Sheriff 1201 S. Industrial Blvd. Greensboro, GA 30642</p>	<p>John Crouse Harbor Club HOA 1039 Lakeside Court Greensboro, GA 30642</p>

<p>Wilbur Williams Rock Island Cove HOA 120 Winding River Road Eatonton, GA 31024</p>	<p>Henry Wheaton Sugar Bend HOA 1080 Carpenter Land Buckhead, GA 30625</p>
<p>Ray Deaton Double Branches HOA 1731 White Oak Drive White Plains, GA 30678</p>	<p>Sheila Lackey Oconee Heights HOA 1030 Edgewater Court Greensboro, GA 30642</p>
<p>Ruth Langevin Salem Plantation HOA 1400 Plantation Drive Greensboro, GA 30642</p>	<p>Sara Folk Parks Mill Crossing HOA 1700 Parks Mill Drive Greensboro, GA 30642</p>
<p>Harley Wood Sebastian Cove HOA 188 Whitney Street Eatonton, GA 31024</p>	<p>Leonard Blount Indian Hills Estate HOA & Pioneer Woods HOA 106 Lancaster Point Statesboro, GA 30458</p>
<p>Robert Self The Pointe HOA 6325 Oak Valley Drive Cumming, GA 30040</p>	<p>Lou Benjamin Waters Edge HOA 127 Blue Heron Drive Eatonton, GA 31024</p>
<p>Honorable Burt Jones State Senator 407 East Second Street Jackson, GA 30233</p>	<p>Honorable Rusty Kidd State Representative 102 S. Wayne Street Milledgeville, GA 31061</p>
<p>Angela Ferguson, Chairman Lake Country Board of Realtors 1041 Village Park Dr., Ste. 103 Greensboro, GA 30642</p>	<p>Wayne Barr, President Lake Oconee Bass Club 971 Madison Road Eatonton, GA 31024</p>
<p>Janet Pearson, President Lake Oconee Water Watch 117 Horseshoe Circle Eatonton, GA 31024</p>	<p>The Lodge at Lake Oconee 111 Stonemark Lane, Ste. 202 Columbia, SC 29210</p>
<p>Michael Lamar Manager, Morgan County 150 E. Washington Street Madison, GA 30650</p>	<p>Robert Markley Morgan County Sheriff 1380 Monticello Road Madison, GA 30650</p>
<p>Bob Hughes, President Morgan Co. Chamber of Commerce 115 East Jefferson Street Madison, GA 30650</p>	<p>Bill Jones Oconee Outdoors Marina P.O. Box 933 Jackson, GA 30233</p>

Honorable Butch Parish State Representative 132 Victory Drive Swainsboro, GA 30401	Paul Van Haute Manager, Putnam County 117 Putnam Drive, Ste. A Eatonton, GA 31024
Howard Sills Putnam County Sheriff 111 Ridley Drive Eatonton, GA 31024	Roddie Anne Blackwell, President Putnam Co. Chamber of Commerce 305 North Madison Ave. P.O. Box 4088 Eatonton, GA 31024
Rabun Neal, President Reynolds Plantation 1000 Vista Drive, Ste. 106 Greensboro, GA 30642	Ralph Vick, Manager Ritz Carlton 1 Lake Oconee Trail Greensboro, GA 30642
William Clark Sugar Creek Marina 353 Parks Mill Drive Eatonton, GA 31024	Jim Twaroski Realty Specialist U.S. Forest Service, South Region 1720 Peachtree Rd., NW, Ste. 7928 Atlanta, GA 30309
Alan Polk U.S. Forest Service, Chattahoochee- Oconee National Forests 1755 Cleveland Highway Gainesville, GA 30501	Judy Lovell Realty Supervisor U.S. Forest Service, Chattahoochee- Oconee National Forests 1755 Cleveland Highway Gainesville, GA 30501
Thomas Dozier Oconee District Ranger U.S. Forest Service, Chattahoochee- Oconee National Forests 1199 Madison Road Eatonton, GA 31024	Jeff McDonald Biologist U.S. Forest Service, Chattahoochee- Oconee National Forests 1199 Madison Road Eatonton, GA 31024
Tamara Johnson U.S. Fish & Wildlife Service 105 Westpark Dr. Athens, GA 30606	Don Imm Field Supervisor U.S. Fish & Wildlife Service 105 Westpark Dr. Athens, GA 30606
Jennifer Shelton, Office Manager Waterfront Marina 144 Collis Marina Road Eatonton, GA 31024	Henry and JoAnn Aldredge 5042 Village Green Drive Mason, OH 45040
Ted Baker 1320 Plantation Drive Greensboro, GA 30642	James and Lisa Berardicurti 153 East River Bend Dr. Eatonton, GA 31024

Denise Bergeland 1100 Eagle Bluff Court Greensboro, GA 30642	Rick and Lynn Brantley 102 Waters Edge Lane Eatonton, GA 31024
Bryan C.W. Tate 5035 Old Branch Court Dunwoody, GA 30338-4012	Rick Cook 1070 Plantation Point Drive Greensboro, GA 30642
Harold Culp 1840 Parks Mill Drive Greensboro, GA 30642	Neal Kenneth Daniel 1071 Horseshoe Drive Greensboro, GA 30642
George Dissmeyer 145 Lake Forest Drive, NE Eatonton, GA 31061	Aggie Pat Dockery 1006 Pine Tree Circle Douglas, GA 31533
J.E. Dukes 258 N Rock Island Drive Eatonton, GA 31024	Michael A. Dull 230 Cobblestone Lane McDonough, GA 30252
Herman Frix 3430 Highway 138, NE Conyers, GA 30013	Ellwood & Connie Hanson 1031 Holmes Drive White Plains, GA 30678
Kenneth Harris 125 Forest Ridge Circle Eatonton, GA 31024	Bob Hess 104 Water's Edge Lane Eatonton, GA 31061
Mike & Jane Hillier 101 N. Sugar Creek Road Buckhead, GA 30625	Cliff & Carol Holbert 2573 Swords Road Greensboro, GA 30642
Wayne & Fran Jones 805 Scenic Route Cordele, GA 31015	Mike & Caroline King 138 Forest Ridge Drive Eatonton, GA 31024
Robin Larson 4730 Bryson Cove Lilburn, GA 30047	Susan Larson 4731 Bryson Cove Lilburn, GA 30047
Steve Mallinson 109 East River Bend Drive, NE Eatonton, GA 31024	Larry & Diane McElroy 107 Lakeside Drive Buckhead, GA 30624
Fred Mohr 1102 Elk River Court Greensboro, GA 30642	Kevin Mullins 1450 Choo Choo Drive Greensboro, GA 30642
Bruce & Donna Paige 105 Pine Circle Eatonton, GA 31024	Harvey A. Phlegar 1490 Plantation Drive Greensboro, GA 30642
Thomas & Diane Pierce 151 Lakemore Drive Eatonton, GA 31024	Milburn Poston 3533 Roxboro Rd. #8 Atlanta, GA 30326

Wayne & Merrill Rosen 1290 Bennett Springs Drive Greensboro, GA 30642	Geraldine Sable 1371 Grayson Point Drive Buckhead, GA 30625
Leo Sauer 1090 Eagle Bluff Court Greensboro, GA 30642	Arthur Schafer 150 Riverside Drive, NE Eatonton, GA 31024
Joe Schneider 2270 Brookmont Trace Marietta, GA 30064	Bill Schwanebeck 117 Chantilly Drive Warner Robins, GA 31088
Tom & Sheila Shalin 1021 Augusta National Court Greensboro, GA 30624	Lester & Gloria Sheppard 1081 Flemings Knoll Greensboro, GA 30642
Ann M. Smith 127 Carolyn Drive Eatonton, GA 31024	Barry & Geroldine C. Tolbert 1000 Cottonwood Lane White Plains, GA 30678
Tom O. Wagoner 515 Mulberry Street, Ste. 300 Macon, GA 31201	Pete Wardlaw 2319 Arabian Drive, NE Marietta, GA 30062
Ron Williams 1091 Whatleys Mill Lane Greensboro, GA 30642	

APPENDIX A
STUDY PLAN CRITERIA
18 CFR § 5.9(b)

Any information or study request must contain the following:

1. Describe the goals and objectives of each study proposal and the information to be obtained;
2. If applicable, explain the relevant resource management goals of the agencies or Indian tribes with jurisdiction over the resource to be studied;
3. If the requester is not a resource agency, explain any relevant public interest considerations in regard to the proposed study;
4. Describe existing information concerning the subject of the study proposal, and the need for additional information;
5. Explain any nexus between project operation and effects (direct, indirect, and/or cumulative) on the resource to be studied, and how the study results would inform the development of license requirements;
6. Explain how any proposed study methodology (including any preferred data collection and analysis techniques, or objectively quantified information, and a schedule including appropriate field season(s) and the duration) is consistent with generally accepted practice in the scientific community or, as appropriate, considers relevant tribal values and knowledge; and
7. Describe considerations of level of effort and cost, as applicable, and why proposed alternative studies would not be sufficient to meet the stated information needs.

**APPENDIX B
WALLACE DAM PROJECT PROCESS PLAN AND SCHEDULE**

(shaded milestones are unnecessary if there are no study disputes; if due date falls on a weekend or holiday, the due date is the following business day)

Responsible Party	Pre-Filing Milestone	Date	FERC Regulation
Georgia Power	Issue Public Notice for NOI/PAD		5.3(d)(2)
Georgia Power	File NOI/PAD with FERC	02/18/2015	5.5, 5.6
FERC	Tribal Meetings	03/20/2015	5.7
FERC	Issue Notice of Commencement of Proceeding; Issue Scoping Document 1	04/20/2015	5.8
FERC	Wallace Dam Project Environmental Site Review and Scoping Meetings	05/19-20/2015	5.8(b)(viii)
All stakeholders	PAD/SD1 Comments and Study Requests Due	06/19/2015	5.9
FERC	Issue Scoping Document 2	07/27/2015	5.1
Georgia Power	File Proposed Study Plan (PSP)	07/27/2015	5.11(a)
All stakeholders	Proposed Study Plan Meeting	08/25-27/2015	5.11(e)
All stakeholders	Proposed Study Plan Comments Due	10/26/2015	5.12
Georgia Power	File Revised Study Plan	11/24/2015	5.13(a)
All stakeholders	Revised Study Plan Comments Due	12/09/2015	5.13(b)
FERC	Director's Study Plan Determination	12/24/2015	5.13(c)
FS, FWS, Georgia DNR	Any Study Disputes Due	01/13/2016	5.14(a)
Dispute Panel	Third Dispute Panel Member Selected	01/28/2016	5.14(d)
Dispute Panel	Dispute Resolution Panel Convenes	02/02/2016	5.14(d)(3)
Georgia Power	Applicant Comments on Study Disputes Due	02/07/2016	5.14(j)
Dispute Panel	Dispute Resolution Panel Technical Conference	02/12/2016	5.14(j)
Dispute Panel	Dispute Resolution Panel Findings Issued	03/03/2016	5.14(k)

Responsible Party	Pre-Filing Milestone	Date	FERC Regulation
FERC	Director's Study Dispute Determination	03/23/2016	5.14(l)
Georgia Power	First Study Season	Jan-Dec 2016	5.15(a)
Georgia Power	Initial Study Report	11/18/2016	5.15(c)(1)
All stakeholders	Initial Study Report Meeting	12/5-6/2016	5.15(c)(2)
Georgia Power	Initial Study Report Meeting Summary	12/21/2016	5.15(c)(3)
All stakeholders	Any Disputes/Requests to Amend Study Plan Due	01/20/2017	5.15(c)(4)
All stakeholders	Responses to Disputes/Amendment Requests Due	02/20/2017	5.15(c)(5)
FERC	Director's Determination on Disputes/Amendments	03/22/2017	5.15(c)(6)
Georgia Power	Second Study Season	Jan-Sept 2017	5.15(a)
Georgia Power	Updated Study Report due	10/11/2017	5.15(f)
All stakeholders	Updated Study Report Meeting	10/16-17/2017	5.15(f)
Georgia Power	Updated Study Report Meeting Summary	11/10/2017	5.15(f)
All stakeholders	Any Disputes/Requests to Amend Study Plan Due	12/11/2017	5.15(f)
All stakeholders	Responses to Disputes/Amendment Requests Due	01/09/2018	5.15(f)
FERC	Director's Determination on Disputes/Amendments	02/08/2018	5.15(f)
Georgia Power	File Preliminary Licensing Proposal	11/21/2017	5.16(a)
All stakeholders	Preliminary Licensing Proposal Comments Due	02/19/2018	5.16(e)
Georgia Power	File Final License Application	05/31/2018	5.17
Georgia Power	Issue Public Notice of License Application Filing	06/14/2018	5.17(d)(2)